

Saltbox Style Homes: A logical progression of the Colonial Style Home was the Saltbox. A full or partial addition was built on the rear of the first floor and the existing rear roof extended at the same pitch or at a slighter pitch. This modification eliminated the second floor windows at the rear of the house but as it was the north facing wall it may have assisted in heating during the winter. The design proved to be an excellent addition and rather than being added later became a part of initial designs.

Our designs are custom with these examples for illustration. Some of the examples are complete and others only to the point necessary to illustrate the concept.

Livable Area: First Floor: 1595 Sq. Ft. Second Floor: 1165 Sq. Ft. Total: 2760 Sq. Ft.

A Saltbox has an inviting appearance but it is also deceiving with its size, seeming larger than it is. The

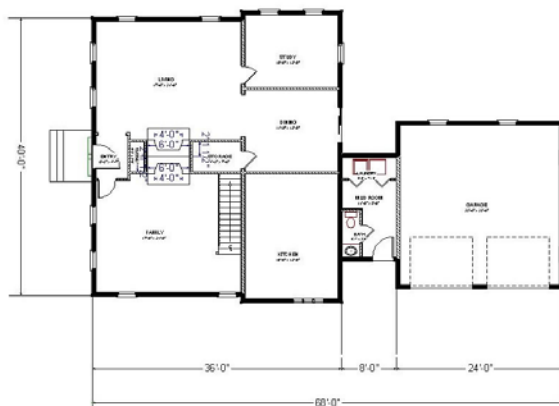


treatment of the lean-to addition has been taken from the Hyland House in Guilford, CT. The only features added have been the shutters and the white trim. As with all of our designs the floor plan has not been completed. The shed dormer is not a full width but it can easily be made to be one. Access to the cellar is from the storage room to the right of the fireplaces. The garage and mud room were just added with little consideration to the location. Relocating

them to the side of the house is an easy task. There are many possibilities for the floor plan when it would be finalized to your particular requirements.

The second floor bathroom could be relocated in the dormer at the rear of the house with the illustrated location used as a closet.

Problems are created in attempts to recreate early plans; windows and stairs are now defined by the International Building Code, as well as head clearance at various locations. These required alterations can be held to a minimum and located in an area where it is less conspicuous.



First Floor



Second Floor

Livable Area: First Floor: 1978 Sq. Ft. Second Floor: 952 Sq. Ft. Total: 2930 Sq. Ft.



of crushed stone to reduce the time spent on maintenance.

This is one of those designs that just everything fell into place. The garage requires a few doors and windows and a flight of stairs to be completed. The roof would have solar panels installed on the back side for electricity and hot water. A vertical axis wind turbine would be used for electric power in the evening. A grey water treatment system would be used to water the areas which are heavily planted. The back yard will use grasses, lilies and large areas